



Professional Medical Display Manufacturer



Distributed by Abletec

康冠医疗

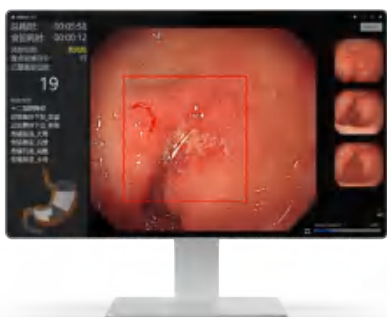
专业医疗显示产品开发智造

2024-9-4



Medical AI Computer Hardware Platform

KTC Medical



8/10.1"
AI Mirror (SOC+NPU)



Ultrasound, Radiology, Pathology, Endoscopy
AI(X86+GPU)



15.6"
AI Conference (SOC+NPU)



27" /32"
Radiology AI (SOC+NPU)



Medical AI Computer Solution (Intel X86 +GPU Platform)

KTC Medical

AIO (All-in-One) X86 computer
For Ultrasound, Endoscopy, Radiology

CPU: i7 12th/13th 12700H / i7 13700H,
DDR: 32G
Storage: 1TB SSD
GPU: MXM RTX3050-8GB
OS: Win10 /Win11
Net: Wi-Fi 6E&BT5.3
Power: Adapter 24V, 330W
Interface: 3*USB3.2 + HDMI-in + HDMI-OUT + RJ45 + Line out + Type-C) + DC jack
Panel: 23.8" FHD, 600nit
DICOM: Gamma/Dicom Calibrated
Video Capture: HDMI*In, Max 3840x2160@60hz
Video Format:YUV422 8bits (Windows: YUY2、Linux: UYVY





Medical Tablet Solution (SOC Platform)

KTC Medical

Medical Tablet
for DR/CT/Ultrasound

8 ",10",11",13",15.6" Series Tablet
With Android, Ubuntu, Debian OS

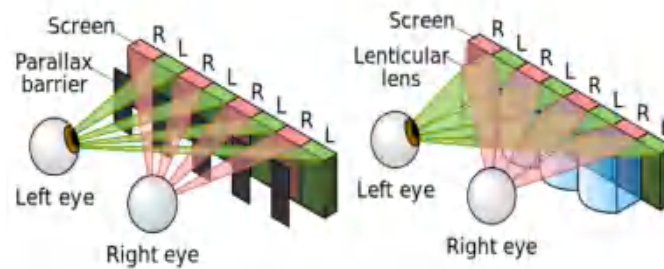




KTC 32inch Glass Free 4K 3D Display

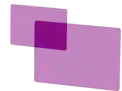
KTC Medical

32-inch, Real 4K Resolution , Light Field Technology
Glass Free 3D



Size: 31.5inch
Resolution: 3840x2160 3D
Observe Distance: 0.7~2meter
3D View Angle: H:60 degrees V: 50 degrees
Brightness: 700nit
Gamut: 99% Adobe, BT2020





KTC 32inch Polarizer 4K 3D Display

KTC Medical

32-inch, Medical 3D Display Technology -Polarizer Film 3D

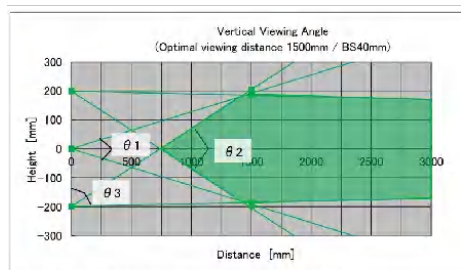
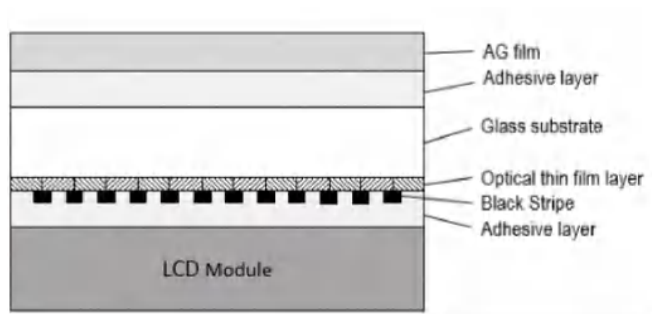


Fig.2 3D viewing area at viewing distance 1500mm and symbol definition of θ1~θ3

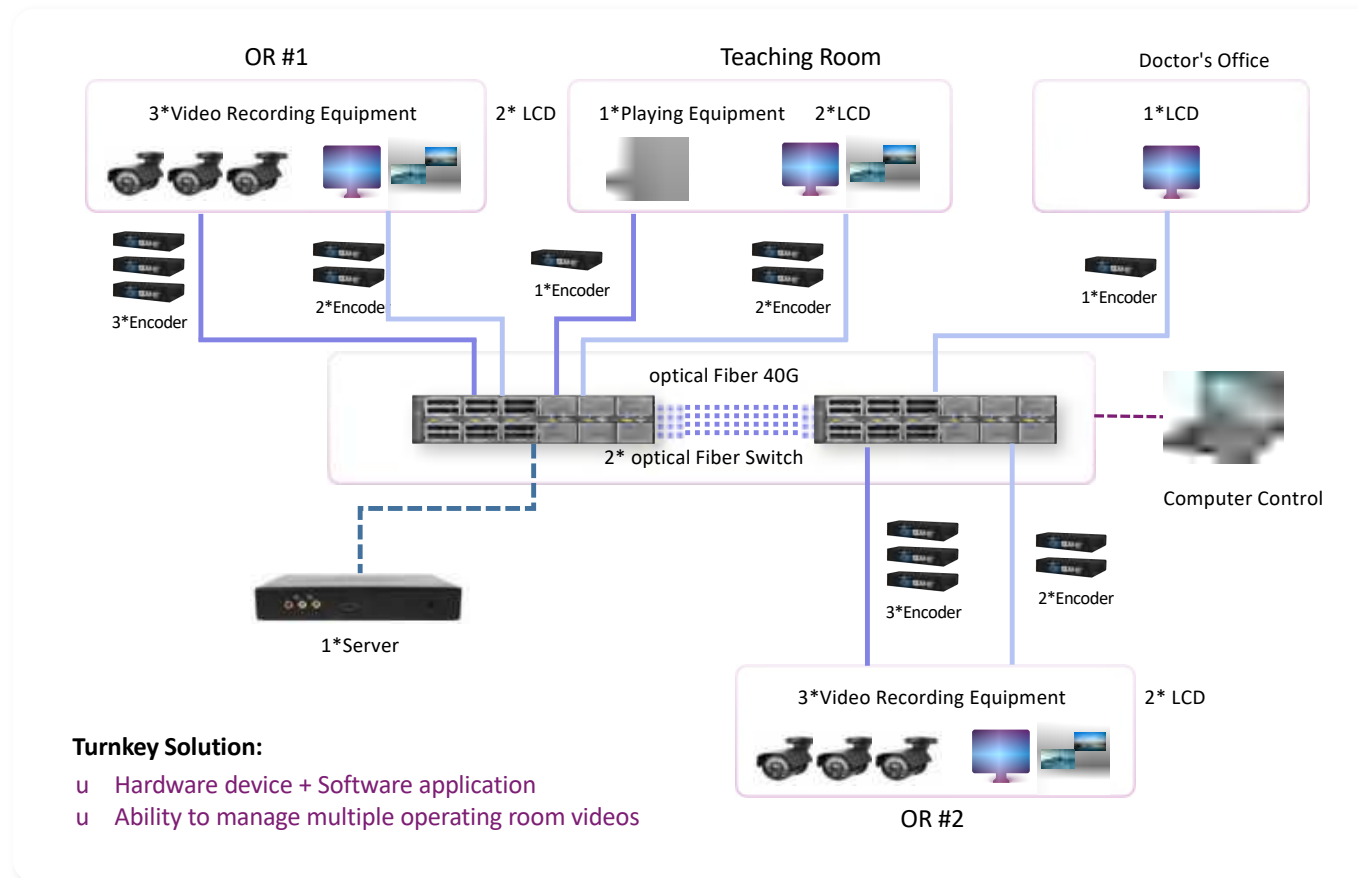
OD (mm)	BS width (mm)	3D Cross Talk (%)	θ1 (degree)	θ2 (degree)	θ3 (degree)
1500	0.040	2%	14.5	30.1	89.4
		4%	15.3	30.8	89.8
		7%	16.4	31.9	90.3





SDVOE for DSA/Digital Operation Room Solution

KTC Medical



One Box (Encoder and Decoder)



OM3-Fiber and 10G/1310nm SPF(10KM)



10G Fiber Switch

- HDMI 2.0 supporting all resolutions up to 594MHz.
- Supporting all HDMI 2.0 formats including multi-channel PCM, Dolby True-HD and DTS-HD master audio.
- End-to-end latency under 100 us.
- Compression, when used, is ultra-lightweight with 1.3-to 1 compression ratio and 100% artifact-free.



Patient Entertainment Display Solution

KTC Medical



Smart Rehabilitation
Mirror



Smart Fitness Mirror



27 inch Mobile Display

Leading new Ways of Rehabilitation Training

It can integrate personalized entertainment content and interactive games to stimulate the enthusiasm of patients to actively participate in rehabilitation training, so that patients can complete rehabilitation training in a relaxed and pleasant atmosphere. It is suitable for various medical institutions and rehabilitation centers to provide patients with a more efficient and interesting rehabilitation experience.

Free adjustment to suit any viewing experience



45° Lateral Rotation
90° Longitudinal Rotation



20cm
Lift Control



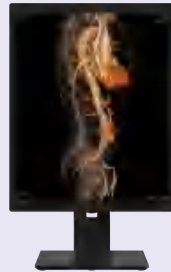
+20°-15°
Pitch Angle Adjustment



Medical Display Portfolio

KTC Medical

Radiological
Diagnostic
Display



Endoscope
Display



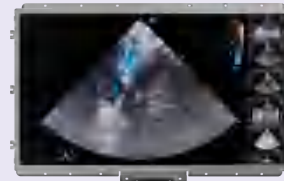
Integrated
Diagnostic
Display



Image
Consultation
Center
Display



Ultrasonic
Display



Operating
Room
Integrated
Display





Medical Display Portfolio

KTC Medical

Radiological diagnostic Solutions

High brightness and stable brightness

High contrast

Built-in environment sensing

Wide viewing Angle



	2024Q1	2024Q2	2024Q3	2024Q4
19" (1M)	MP 19X1M	L:1300cd/m ₂ CR:1200:1 R/T:30ms VA:178°/178	Gray scale screen	
21.3" (2M)	MP	21X2M-I0 L:1900cd/m ₂ CR:1800:1 R/T:18ms VA:178°/178	Gray scale screen	
		21X2C-I0 L:1000cd/m ₂ CR:1500:1 R/T:16ms VA:178°/178	Color scale screen	
21.3" (3M)	MP	21X3M-I0 L:2000cd/m ₂ CR:1500:1 R/T:28ms VA:170°/170	Gray scale screen	
		21X3C-I0 L:1000cd/m ₂ CR:1500:1 R/T:28ms VA:178°/178	Color scale screen	
	DP	21X3M-I3 L:2500cd/m ₂ CR:2500:1 R/T:25ms VA:170°/170	Gray scale screen Ultra-narrow edge	
		21X3C-I3 L:1100cd/m ₂ CR:2000:1 R/T:25ms VA:178°/178	Color scale screen Ultra-narrow edge	
21.3" (5M)	MP	21X5M-I3 L:3000cd/m ₂ CR:2000:1 R/T:25ms VA:178°/178	Gray scale screen Ultra-narrow edge	
		21X5C-I3 L:1150cd/m ₂ CR:2000:1 R/T:25ms VA:178°/178	Color scale screen Ultra-narrow edge	
		21X5M-I0 L:1200cd/m ₂ CR:1200:1 R/T:25ms VA:178°/178	Gray scale screen	

MP 已量产 DP 可送样 PL 设计中



Comprehensive diagnostic solutions

High brightness and stable brightness

High contrast

Integrated dual screen

Wide colour gamut



	2024Q1	2024Q2	2024Q3	2024Q4
24"	MP	24X20-B	L:600cd/m ² CR:1000:1 R/T:14ms VA:178°/178	1920*1200 High brightness Color scale screen
		24X2C-B1	L:600cd/m ² CR:1000:1 R/T:14ms VA:178°/178	2M 1080P High brightness Color scale screen
27"	MP	27X4C	L:350cd/m ² CR:1000:1 R/T:14ms VA:178°/178	4M Integrated dual screen Ultra-narrow edge
	DP	27X4C-K1	L:600cd/m ² CR:1000:1 R/T:5ms VA:178°/178	4M Mini LED Wide colour gamut
30"	MP	30X6C	L:1300cd/m ² CR:2000:1 R/T:28ms VA:178°/178	6M High brightness Integrated dual screen
31"	MP	31X12C	L:1200cd/m ² CR:1500:1 R/T:14ms VA:178°/178	12M Wide colour gamut Integrated dual screen
32"	MP	S32X8C-L	L:1000cd/m ² CR:1000:1 R/T:14ms VA:178°/178	8M 4K Integrated dual screen
		32X30	L:450cd/m ² CR:150000:1 R/T:0.03ms VA:178°/178	4K OLED Wide colour gamut Integrated dual screen

MP 已量产 DP 可送样 PL 设计中



Endoscopy solutions

SDI/12G SDI

Medical grade surface protection

Hd color reproduction

Wide colour gamut



	2024Q1	2024Q2	2024Q3	2024Q4
22"	MP	22A30	L:250cd/m ² CR:1000:1 R/T:14ms VA:178°/178	Full HD 1080P
24"	MP	24A30	L:600cd/m ² CR:1000:1 R/T:14ms VA:178°/178	
27"	MP	27A30	L:800cd/m ² CR:1000:1 R/T:16ms VA:178°/178	4k High brightness Wide colour gamut
	DP	27A30-K	L:800cd/m ² CR:1000:1 R/T:14ms VA:178°/178	Mini LED 4KHDR Wide colour gamut
	MP	27A31	L:1000cd/m ² CR:1000:1 R/T:14ms VA:178°/178	High brightness Full HD 1080P
32"	MP	32A30	L:1000cd/m ² CR:1000:1 R/T:14ms VA:178°/178	4K High brightness Wide colour gamut
	PL	32A30-E	L:1000cd/m ² CR:1000:1 R/T:14ms VA:178°/178	Moth eye technique High brightness Wide colour gamut

MP 已量产 DP 可送样 PL 设计中



Intelligent consultation display

- * Easy to use, integrated with a variety of conference apps (Projection screen/spotlight, etc.)
- * Can be used in the meeting and consultation scenarios
- * 4K HD display, tempered glass
- * Infrared touch, one multi-screen

2024Q1

2024Q2

2024Q3

2024Q4

86"

MP

86C10	L:500cd/m ²	CR:1100:1	R/T:8ms	VA:178°/178	
86C20	L:500cd/m ²	CR:1100:1	R/T:8ms	VA:178°/178	dual system

98"

MP

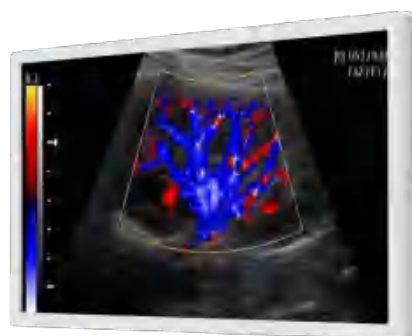
98C10	L:500cd/m ²	CR:1300:1	R/T:8ms	VA:178°/178	
98C20	L:500cd/m ²	CR:1200:1	R/T:8ms	VA:178°/178	dual system

MP 已量产 DP 可送样 PL 设计中



Ultrasonic display - U series

KTC Medical



14"TP	MP	14U10	1920*1080@60Hz	6-bit + Hi-FRC	250nits/30Kh	72%NTSC	VGA/DVI/HDMI/DP
15"	MP	15U12	1024*768@60Hz	6-bit + Hi-FRC	300nits/70Kh	72%NTSC	VGA/HDMI
21.5"	MP	22U30	1920*1080@60Hz	6-bit + Hi-FRC	250nits/70Kh	72%NTSC	VGA/DVI/HDMI/DP
23.8"	MP	24U10	1920*1080@60Hz	6-bit + Hi-FRC	250nits/30Kh	72%NTSC	VGA/DVI/HDMI/DP
21.5"	PL	ELED	1920*1080	8bit	1000nits/50Kh	72%NTSC	1152 Zones
23.8"	PL	ELED	1920*1080	8bit	1000nits/50Kh	72%NTSC	1152 Zones
27"	PL	Mini LED	1920*1080	8bit+RFC	1000nits/50Kh	80%NTSC	1152 Zones

MP Mass Production PL Planning



Ultrasonic display - M series

KTC Medical



15.6"	MP	16M16-B	1920*1080@60Hz	8 bit	350nits/30Kh	74%NTSC	
19"	MP	19M11	1280*1024@60Hz	6-bit + Hi-FRC	250nits/70Kh	73%NTSC	VGA/DVI
21.5"	MP	22M11-L	1920*1080@60Hz	6-bit + Hi-FRC	350nits/70Kh	74%NTSC	HDMI
21.5"	MP	22M42	1920*1080@60Hz	6-bit + Hi-FRC	250nits/30Kh	74%NTSC	HDMI
21.5"	PL	ELED	1920*1080	8bit	1000nits/50Kh	72%NTSC	1152 Zones
23.8"	PL	ELED	1920*1080	8bit	1000nits/50Kh	72%NTSC	1152 Zones
27"	PL	Mini LED	1920*1080	8bit+RFC	1000nits/50Kh	80%NTSC	1152 Zones

MP

Mass Production

PL

Planning



Medical Display Portfolio

KTC Medical

DOR

- * Wall panel design for operating rooms
- Professional design,
- in line with all medical markers
- * Contour design, can be horizontal,
- multi-size seamless integration



2024Q1

2024Q2

2024Q3

2024Q4

23.8"

MP

24H90-T0

L:600cd/m²

CR:1000:1

R/T:14ms

VA:178°/178

27"

MP

27H80-T0

L:350cd/m²

CR:1000:1

R/T:14ms

VA:178°/178

翻盖设计

43"

MP

43H90-T0

L:500cd/m²

CR:1200:1

R/T:8ms

VA:178°/178

55"

MP

55H90-T0

L:700cd/m²

CR:1100:1

R/T:8ms

VA:178°/178

65"

MP

65H80

L:500cd/m²

CR:1100:1

R/T:8ms

VA:178°/178

翻盖设计

65H90-T0

L:500cd/m²

CR:1200:1

R/T:8ms

VA:178°/178

MP 已量产

DP 可送样

PL 设计中



Design Comply with Certifications

KTC Medical

CE



NOM



FC



CB



KTC Profile

KTC Medical



1995
Founded



7300
Staff



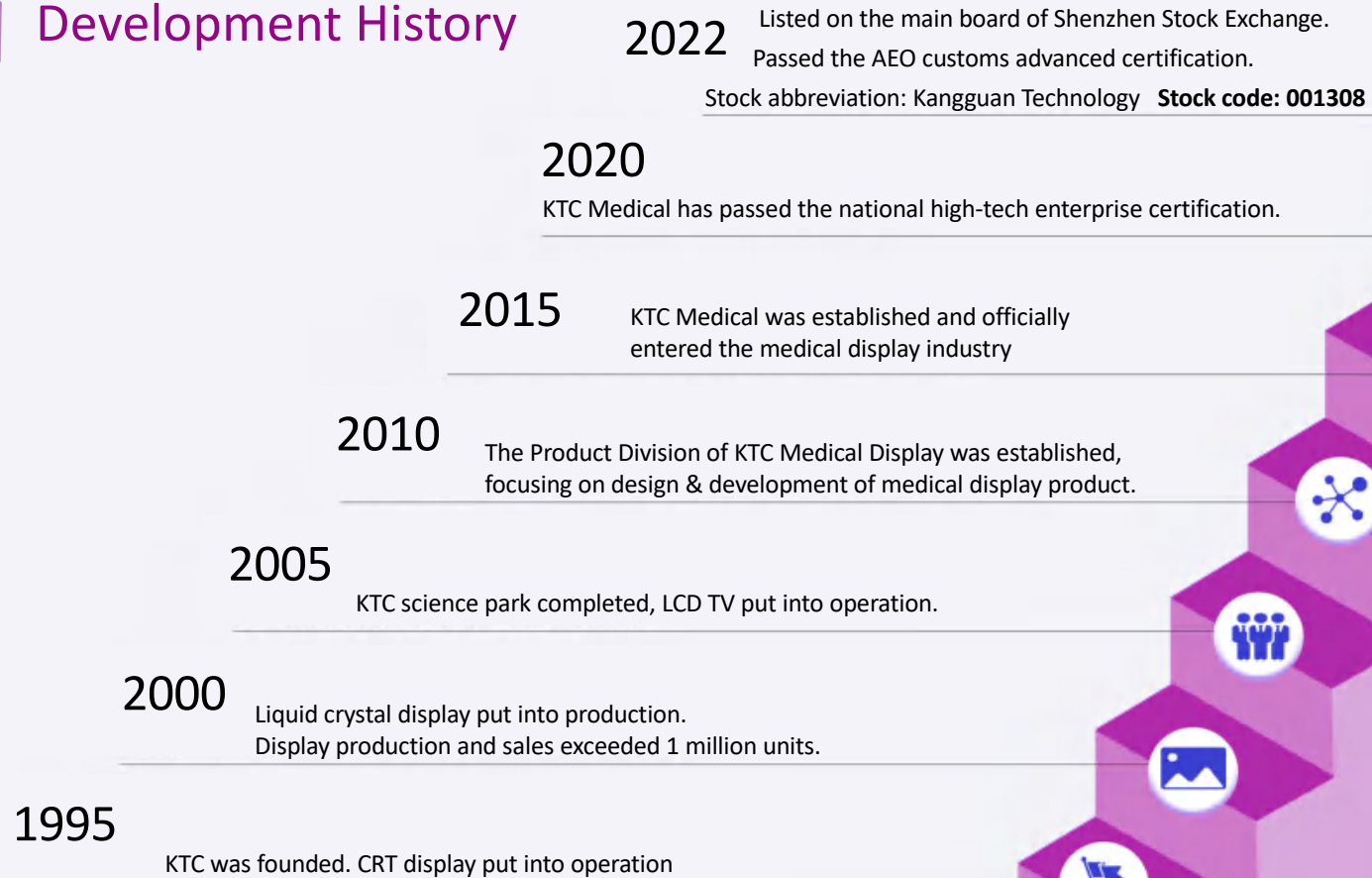
520,000m²
Area of structure



13.4 Billion (RMB)+
Revenue in 2023



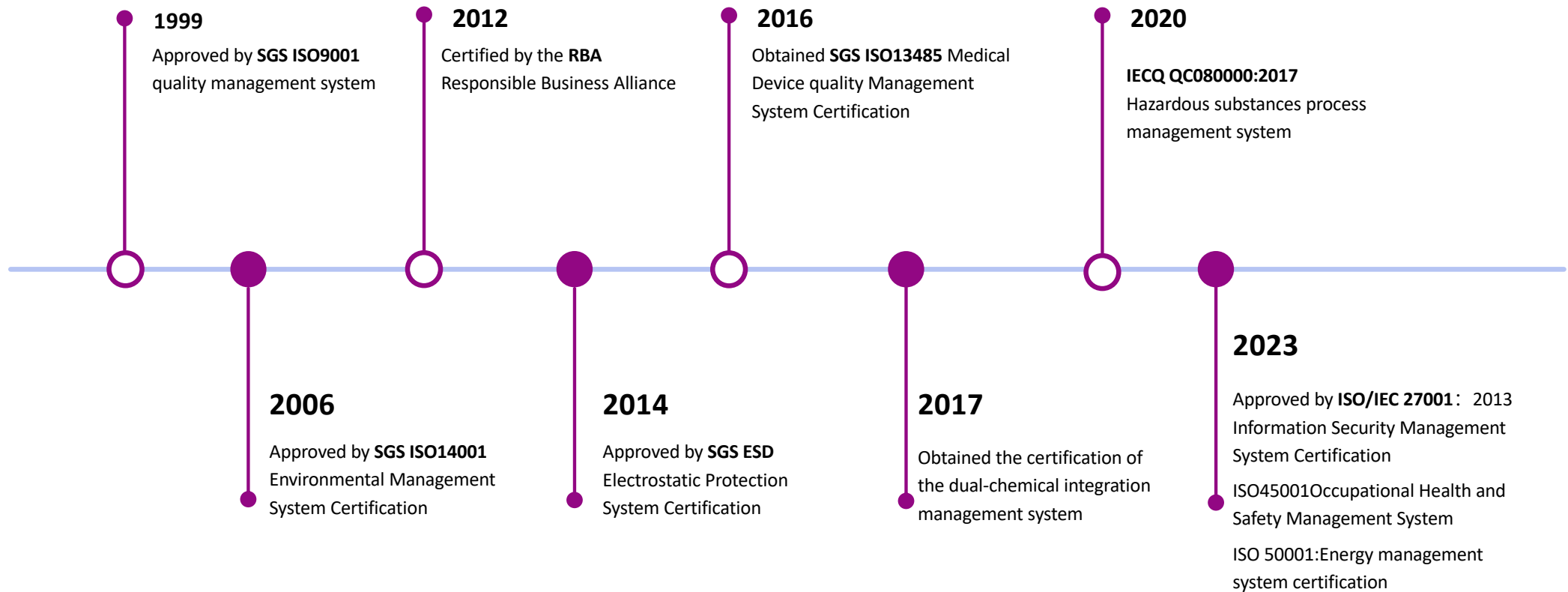
Development History





Management System Certification

KTC Medical





Headquarters in Shenzhen (Bantian)



Super Factory in Huizhou

KTC has built a world-class research and development network and international development experience, and exported the “KTC Super Factory” model to more than 30 countries and regions around the world.



Increasingly perfect overseas operation network

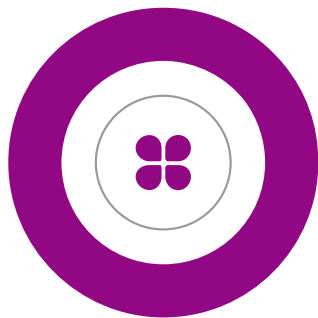
KTC Medical





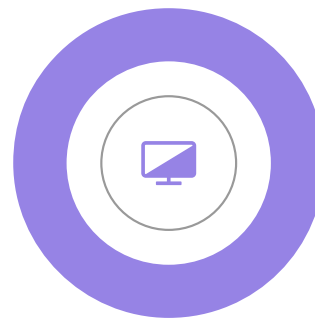
KDM Service—3 Models

KTC Medical



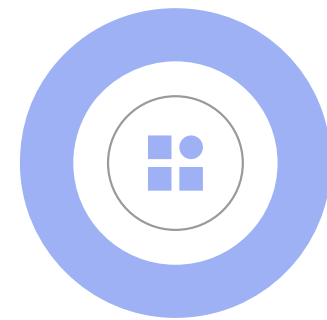
SKD

Semi-knocked down shipments: Shipped in the form of semi-finished products, which are assembled by the customer at the factory in the country where they are located.



CBU

Whole machine shipment: the whole machine is exported directly to the customer's country without any processing or assembly.



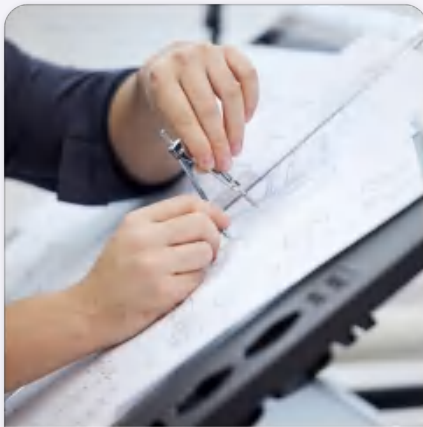
CKD

Fully Knocked Down Shipment: Shipped in the form of Fully Knocked Down Parts, which are patched and assembled by the customer at the factory in the country where the product is located.



Cooperation Model

KTC Medical



JDM

Joint Design Manufacture



ODM

Original Design Manufacture



OEM

Original Equipment Manufacture



EMS

Electronic Manufacturing Services



Manufacturing Capacity

KTC Medical

12 million
units/year

Smart TV

3million
units/year

Intelligent interactive Display
Products

0.2million
units/year

Medical Display

Meet the production requirements of
5-inch to 120-inch display end products

18

Intelligent display products
Complete production line

21

Display module
Production line

14

Movement plate
Production line

12

Lightbar production line



Machine plate production line



SMT patch production line



Film cutting line



Automatic production line of backlight
module



Complete production line



OCA Bonding

Glue Solution for Portable Ultrasound and Monitor

KTC Medical

Glue dispensing and cover plate bonding process



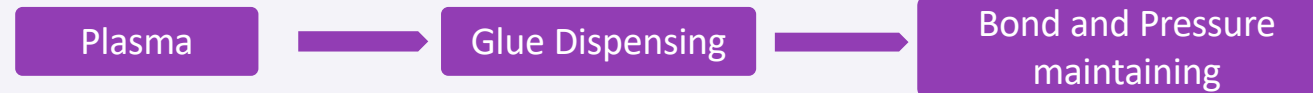
Plasma Cleaning Machine



Glue Dispensing Machine



Pressure Maintaining Machine



DOWSIL™ 832 Glue Feature:

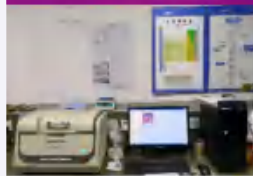
- ◆ High adhesive strength
- ◆ Will not corrode metal or other corrosion-sensitive materials
- ◆ Forms flexible, long-lasting seal
- ◆ Low odor

E6173 Glue Feature:

- ◆ High adhesive strength
- ◆ Moveable in 15 minutes without pressure maintaining
- ◆ Good adhesion to a wide range of substrates: plastics,metals.....



RoHS Laboratory



RoHs inspection equipment

ORT Laboratory



ORT aging equipment

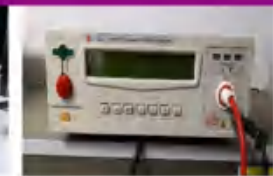
Safety Laboratory



Combined lightning surge generator



ESD test equipment



insulation withstand voltage tester

Structural test Laboratory



Quadratic test equipment



Three dimensional test equipment

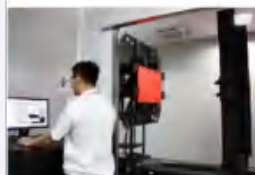
Acoustic-optical Laboratory



anechoic chamber



integrating sphere



Optical detector



VIC test -FCIC test equipment

Environmental Reliability Laboratory



High low temperature & damp heat test box



Vibration test equipment



Drop test equipment



Salt spray test equipment



Holding test equipment



KTC Design and Produce Boards

KTC Medical



Mainboard

The development scheme is complete.

Certification Lead:
Licensed by Netflix and YouTube.

Integrated design:
power supply, motherboard, backlight
control circuit.

Greatly simplify the production process
and production efficiency of the project.

Power Board

Various power models:
45W/75W/160W/300W/400W

The power supply board is equipped
with LED optical drive.



Sensor

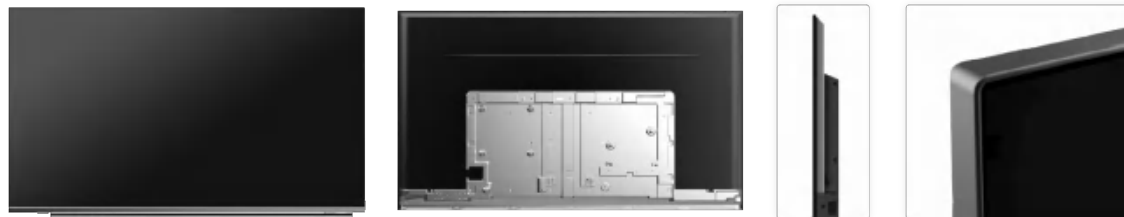
Key Board

Provide a variety of buttons:
5-key keypad, 7-key keypad, 5-way keypad

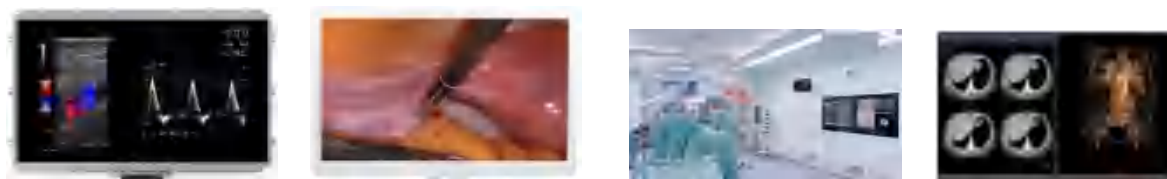
In order to improve production efficiency and
save costs, IR and key integrated board has
been developed.

KTC Design and Produce LED Module

KTC Medical



KTC Commercial LED Module: 43"~98", for TV, White Board, PID



KTC Medical LED Module: 21.5"~55", for Medical imaging



KTC Industry LED Module: 10.1"~65", for Industry, ATC application

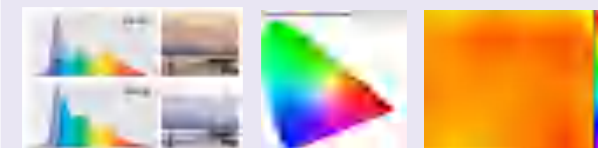
KTC Mini LED Technology



Low Blue

105% NTSC

BU:95%



Why Choose KTC ?

KTC Medical



One Stop Procurement

We Only Focus on Display
KTC is Display Super Market



Competition Cost

Supply Chain Integration



High Quality

Super Factory 4.0,
1000+ R&D Engineers



JDM/ODM/MTO/EMS

Flexible cooperation model



Abletec
Distributed by Abletec

Company: ABLETEC HOLDINGS LIMITED

Mobile/whatsapp: +852-5957 9178

E-Mail: musk.lyu@abletec.com.hk

Add: : R P(43), 1/F, Phase 3, Kaiser Estate, No.1

Hok Yuen St., Hung Hom, Kowloon, Hong Kong

<http://www.abletec.com.hk>