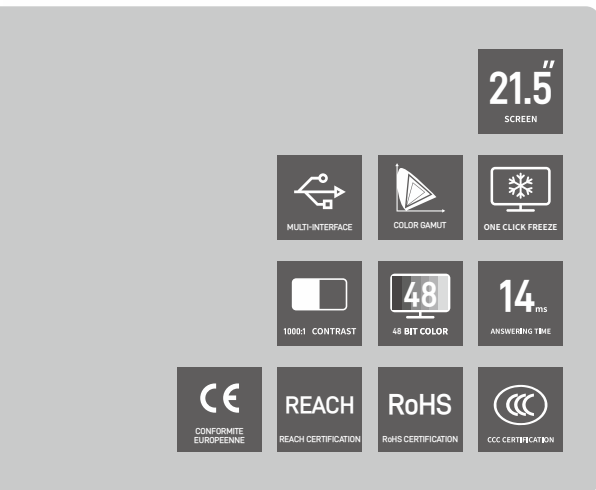


21.5-inch Medical Endoscopy Display



- HD display, true color restoration



- Smooth dynamic images

·Full plane design, in line with environmental protection requirements

·Nano-stain resistant coating

·One-click freeze function to lock the instantaneous screen

The 22A30 is a medical display designed for medical endoscopy display and surgical monitoring. Support dynamic image real-time display, can capture the picture with one key, to achieve picture freezing. Using a new appearance design, waterproof and antibacterial, thinner and lighter than the traditional equipment screen, adapt to a variety of complex hospital environments, to meet the needs of surgical treatment medical display.

Multi-interface mode

Multi-interface mode, multi-signal mode compatible, support multi-signal loop out. Fully meet the needs of a variety of brands, a variety of equipment.

Precise color calibration

Medical display standard, multiple GAMMA groups optional. Thus, the color of human tissue in minimally invasive surgery can be accurately restored, so that the surgeon can make a more accurate judgment.

Multiple LUT mode switching

Support a variety of LUT mode switching, adapt to different medical image cameras.

Backlight energy saving technology

Support backlight energy-saving technology, effectively extend the service life of the LCD screen.

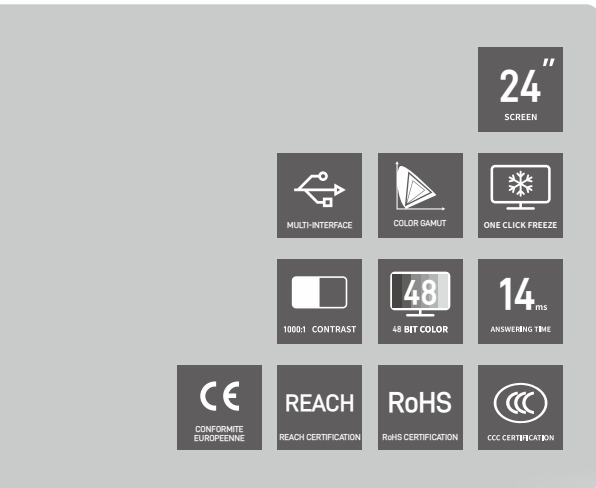
21.5-inch Medical Endoscopy Display

Model number: 22A30

Technical specification

Device type	22-inch medical endoscope display
Backlight type	LED
Panel size	21.5-inch
Viewing display area	475.2× 267.3mm
Maximum resolution	1920*1080 @60Hz
Pixel Pitch	0.2475× 0.2475(mm)
Color Depth	16.7M
Luminance	250cd/m ² (Typ.)
Contrast	1000: 1(Typ.)
Response time	TR+TF=14ms
Viewing Angle	R/L: 178(Typ.) U/D: 178(Typ.)
Input interface	VGA/DVI/S-VIDEO/SDI/BNC(AV)/YPbPr/RGB/RS232/USB
Output interface	DVI
GAMMA	LINEAR/Gamma 1.8/Gamma 1.9/Gamma 2.0/Gamma 2.1/Gamma 2.2/Gamma 2.3/ Gamma 2.4/Gamma 2.5/Gamma 2.6/DICOM
Power adapter	IEC320-C14 input interface 3PIN DC output Input voltage: AC 100~240V,50~60Hz Output voltage: 12V Output power: 84W
Display size	521.2 * 330* 62.5mm
Net weight of display	8.3Kg(Desktop)
Storage/transportation environment	Temperature: -20°C-60°C Humidity: 10% -90%
Working environment	Temperature: 0°C-50°C Humidity: 20% -85%
Power consumption	Maximum: ≤50W Standby: ≤1.5W

24-inch Medical Endoscopy Display



- HD display, true color restoration



- Smooth dynamic images

·Full plane design, in line with environmental protection requirements

·Nano-stain resistant coating

·One-click freeze function to lock the instantaneous screen

The 24A30 is a medical display designed for medical endoscopy display and surgical monitoring. Support dynamic image real-time display, can capture the picture with one key, to achieve picture freezing. Using a new appearance design, waterproof and antibacterial, thinner and lighter than the traditional equipment screen, adapt to a variety of complex hospital environments, to meet the needs of surgical treatment medical display.

Multi-interface mode

Multi-interface mode, multi-signal mode compatible, support multi-signal loop out. Fully meet the needs of a variety of brands, a variety of equipment.

Precise color calibration

Medical display standard, multiple GAMMA groups optional. Thus, the color of human tissue in minimally invasive surgery can be accurately restored, so that the surgeon can make a more accurate judgment.

Multiple LUT mode switching

Support a variety of LUT mode switching, adapt to different medical image cameras.

Backlight energy saving technology

Support backlight energy-saving technology, effectively extend the service life of the LCD screen.

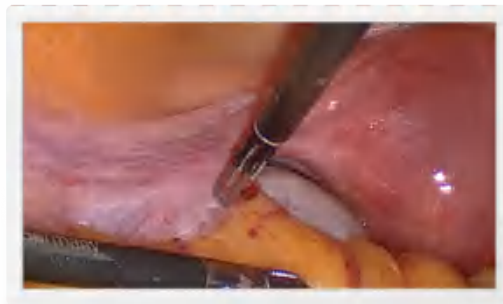
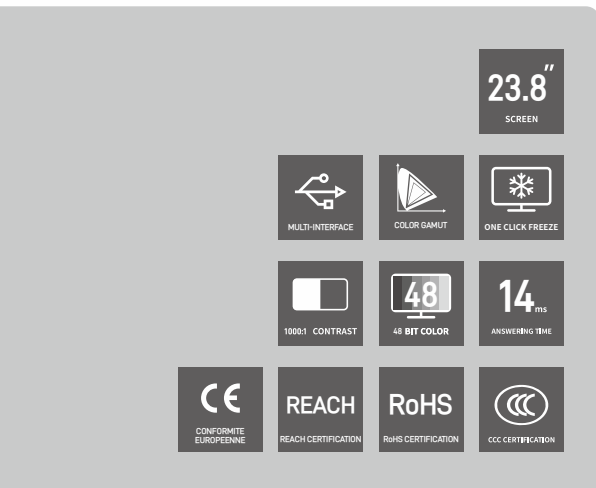
24-inch Medical Endoscopy Display

Model number: 24A30

Technical specification

Device type	24-inch medical endoscope display
Backlight type	LED
Panel size	24-inch
Viewing display area	518.4×324mm
Maximum resolution	1920×1200@ 60Hz
Pixel Pitch	0.27× 0.27(mm)
LUT	48Bit
Luminance	600cd/m ² (Typ.)
Contrast	1000: 1(Typ.)
Response time	TR+TF=14ms
Viewing Angle	R/L: 178(Typ.) U/D: 178(Typ.)
Display surface treatment	Haze 25%
Input interface	SDI-IN/DVI-IN/VGA/BNC/Y-C/YPbPr-IN/RS232/HSYNC/VSYNC/USB
GAMMA	LINEAR/Gamma 1.8/Gamma 1.9/Gamma 2.0/Gamma 2.1/Gamma 2.2/Gamma 2.3/Gamma 2.4/ Gamma 2.5/Gamma 2.6/DICOM
Power adapter	IEC320-C14input interface 3PIN DC output Input voltage: AC100~240V,50~60Hz Output voltage: 24V Output power: 120W
Display size	572 *390.6* 62.5mm
Net weight of display	6.5Kg(Excluding base)
Storage/transportation environment	Temperature: -20°C-60°C Humidity: 10% -90%(No condensation)
Working environment	Temperature: 0°C-50°C Humidity: 20% -85%(No condensation)
Power consumption	Max: ≤40W Standby: ≤1.5W

23.8-inch Medical Endoscopy Display



- Support multiple interfaces



- Smooth moving images

24X2C-B1 is a medical monitor designed for medical endoscopic display and surgical surveillance. It has advanced display technology and is designed for use in medical environments. It supports real-time display of dynamic images, adapts to a variety of complex environments in hospitals, and meets the needs of medical display for surgical treatment.

Precise color calibration

Careful measurements were taken and every gray scale tone was set so that the monitor meets DICOM standards and multiple GAMMA groups are available. This allows it to accurately reproduce the color of human tissue during minimally invasive surgery for more accurate judgment by the surgeon.

Multi-interface mode

24X2C-B1 comes with a multi-interface mode, multi-signal mode compatibility, to meet the needs of various brands and various devices.

Multiple LUT mode switching

Multiple LUT modes are freely switchable, and the machine can adapt to different professional equipment images, thus ensuring that every detail of the medical image is perfectly presented.

Backlight energy-saving technology

Support the backlight energy-saving technology, effectively prolong the service life of the LCD screen.

23.8-inch Medical Endoscopy Display

Model number: 24X2C-B1

Technical Specification

Device Type	23.8-inch Medical Endoscopy Display
Backlight Type	LED
Panel Size	23.8 Inch
Viewing Display Area	527.04× 296.46mm
Max resolution	1920*1080 @60Hz
Dot Pitch	0.2745× 0.2745(mm)
Display Color	16.7M
LUT	48Bit
Brightness	600cd/m ² (Typ.)
Contrast Ratio	1000: 1(Typ.)
Response Time	TR+TF=14ms
View Angle	R/L: 178(Typ.) U/D: 178(Typ.)
Surface treatment	Haze 25%
Input Interface	DVI/DP/HDMI
GAMMA	LINEAR/Gamma 1/Gamma 2/Gamma 3/Gamma 4/CRT/DICOM1/DICOM2/DSA/DSI/(CT/MRI)
Size	567 * 336.5* 59.5mm
Net Weight	4.2Kg(without Base)
Storage and Transportation Environment	Temperature: -20°C~60°C Humidity: 10% ~90%
Working Environment	Temperature: 0°C~50°C Humidity: 20% ~85%
Power Consumption	Max: ≤40W Standby: ≤1.5W

27-inch Medical Endoscopy Display



- 4K ultra HD display, true color restoration



- Smooth dynamic images

- Support one-click PIP function

The 27A30 is a 4K medical display designed for medical endoscopy display and surgical monitoring. Support dynamic image real-time display, can capture the picture with one key, to achieve picture freezing. Using a new appearance design, waterproof and antibacterial, thinner and lighter than the traditional equipment screen, adapt to a variety of complex hospital environments, to meet the needs of surgical treatment medical display.

Equipped with 12GSDI

Set the 12GSDI interface with 12GSDI loop-out. Using optical fiber to transmit signals, the signal transmission process is not affected by electromagnetic interference and signal attenuation, thus ensuring the stability of signal transmission. It can realize the transmission of 4K, 8K and other large video signals with a single fiber, and the transmission speed can reach 12Gbps.

Multi-interface setup

Multi-interface Settings, support multi-channel HD signal input and output, provide you with flexible window layout mode, HDMI support 2.0.

Multiple LUT mode switching

Support a variety of LUT mode switching, adapt to different medical image cameras.

Support picture-in-picture function

Insert one or more compressed sub-screens on the normal viewing main screen at the same time, so that you can monitor other channels while watching the main screen.

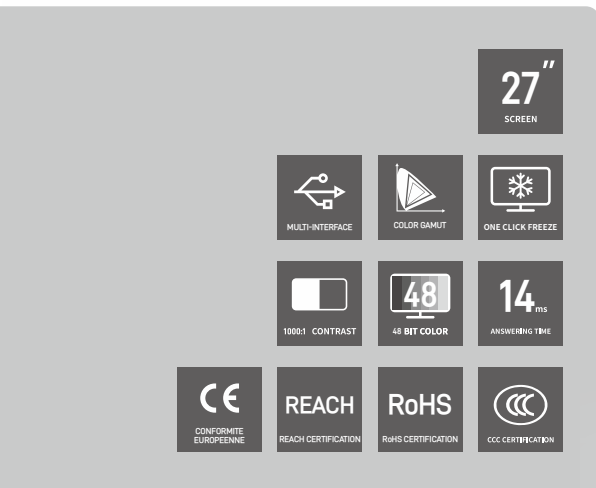
27-inch Medical Endoscopy Display

Model number: 27A30

Technical specification

Device type	27-inch medical endoscope display
Backlight type	LED
Panel size	27-inch
Viewing display area	596.16 x 335.34mm
Maximum resolution	3840*2160@60Hz
Pixel Pitch	0.15525× 0.15525(mm)
LUT	48Bit
Luminance	800cd/m ² (Typ.)
Contrast	1000: 1(Typ.)
Response time	TR+TF=16ms
Viewing Angle	R/L: 178(Typ.) U/D: 178(Typ.)
Display surface treatment	Haze 25%
Input interface	OPTICAL/12G SDI-IN(Optional)/4*3G SDI(Optional)/DVI-IN/HDMI/DP*2
GAMMA	LINEAR/1.8/2.0/2.2/2.4/2.6/ DICOM1/HLG/DSA/DSI
Power adapter	IEC320-C14input interface . 3PIN DC output Input voltage: AC100~240V,50~60Hz Output voltage: 24V Output power: 120W
Display size	663.94x421.94x69.44mm
Net weight of display	13Kg(Desktop)
Storage/transportation environment	Temperature: -20°C~60°C Humidity: 0% ~90%(No condensation)
Working environment	Temperature: 0°C~50°C Humidity: 20%~85%(No condensation)
Power consumption	Max: ≤90W Standby: ≤1.5W

27-inch Medical Endoscopy Display



- HD display, true color restoration



- Smooth dynamic images

·Full plane design, in line with environmental protection requirements

·Nano-stain resistant coating

·One-click freeze function to lock the instantaneous screen

The 27A31 is a medical display designed for medical endoscopy display and surgical monitoring. Support dynamic image real-time display, can capture the picture with one key, to achieve picture freezing. Using a new appearance design, waterproof and antibacterial, thinner and lighter than the traditional equipment screen, adapt to a variety of complex hospital environments, to meet the needs of surgical treatment medical display.

Multi-interface mode

Multi-interface mode, multi-signal mode compatible, support multi-signal loop out. Fully meet the needs of a variety of brands, a variety of equipment.

Precise color calibration

Medical display standard, multiple GAMMA groups optional. Thus, the color of human tissue in minimally invasive surgery can be accurately restored, so that the surgeon can make a more accurate judgment.

Multiple LUT mode switching

Support a variety of LUT mode switching, adapt to different medical image cameras.

Backlight energy saving technology

Support backlight energy-saving technology, effectively extend the service life of the LCD screen.

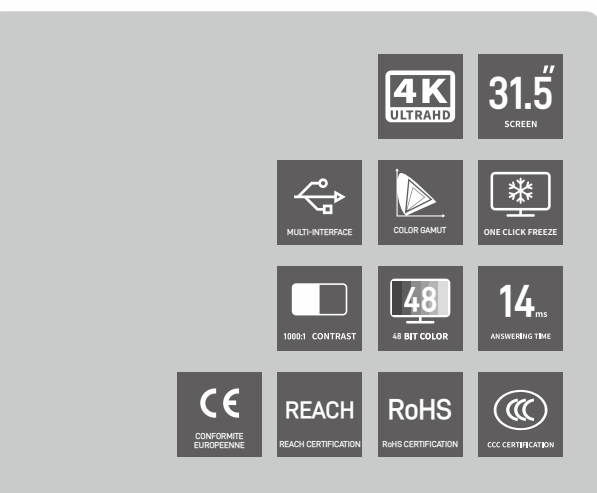
27-inch Medical Endoscopy Display

Model number: 27A31

Technical specification

Device type	27-inch medical endoscope display
Backlight type	LED
Panel size	27-inch
Viewing display area	597.89×336.31mm
Maximum resolution	1920×1080@ 60Hz
Pixel Pitch	0.3114× 0.3114(mm)
LUT	48Bit
Luminance	1000cd/m ² (Typ.)
Contrast	1000: 1(Typ.)
Response time	TR+TF=14ms
Viewing Angle	R/L: 178(Typ.) U/D: 178(Typ.)
Display surface treatment	Haze 25%
Input interface	SDI-IN/DVI-IN/VGA/BNC/YPbPr-IN/VSYNC/USB
GAMMA	LINEAR/Gamma 1.8/Gamma 1.9/Gamma 2.0/Gamma 2.1/Gamma 2.2/Gamma 2.3/Gamma 2.4/ Gamma 2.5/Gamma 2.6/DICOM
Power adapter	IEC320-C14input interface 3PIN DC output Input voltage: AC100~240V,50~60Hz Output voltage: 24V Output power: 120W
Display size	645 *398.3* 59mm
Net weight of display	6.5Kg(Excluding base)
Storage/transportation environment	Temperature: -20°C-60°C Humidity: 10% ~90%(No condensation)
Working environment	Temperature: 0°C-50°C Humidity: 20%-85%(No condensation)
Power consumption	Max: ≤40W Standby: ≤1.5W

31.5-inch Medical Endoscopy Display



- 4K ultra HD display, true color restoration



- Smooth dynamic images

- Support one-click PIP function

32A30 is a 4K medical display designed for medical endoscopy display and surgical monitoring. Support dynamic image real-time display, can capture the picture with one key, to achieve picture freezing. Using a new appearance design, waterproof and antibacterial, thinner and lighter than the traditional equipment screen, adapt to a variety of complex hospital environments, to meet the needs of surgical treatment medical display.

High transmittance anti-reflection protection panel

The use of high transmittance anti-reflection protection panel, eliminate the vertigo caused by reflection, the picture is clearer.

Multi-interface setup

Multi-interface Settings, support multi-channel HD signal input and output, provide you with flexible window layout mode, HDMI support 2.0.

LED backlight LCD panel

Environment-friendly LED backlight LCD panel, low power consumption, long life.

Equipped with 12GSDI

Set the 12GSDI interface with 12GSDI loop-out. Using optical fiber to transmit signals, the signal transmission process is not affected by electromagnetic interference and signal attenuation, thus ensuring the stability of signal transmission. It can realize the transmission of 4K, 8K and other large video signals with a single fiber, and the transmission speed can reach 12Gbps.

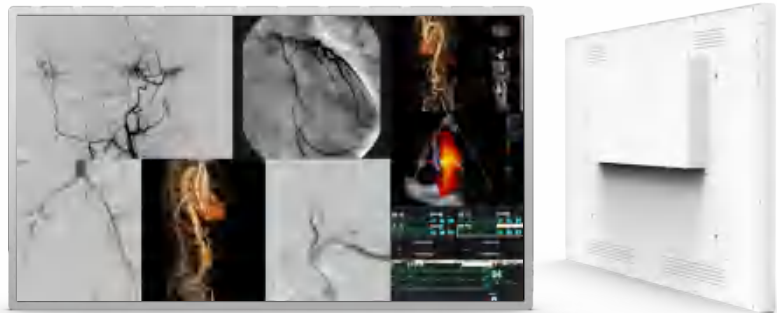
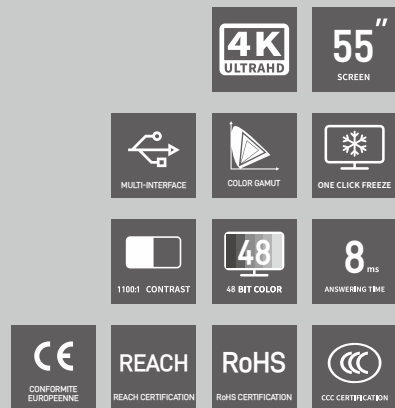
31.5-inch Medical Endoscopy Display

Model number: 32A30

Technical specification

Device type	32-inch medical endoscope display
Backlight type	LED
Panel size	31.5-inch
Viewing display area	679.31 x 392.23mm
Maximum resolution	3840*2160@60Hz
Pixel Pitch	0.18159x0.18159(mm)
LUT	48Bit
Luminance	1000cd/m ² (Typ.)
Contrast	1000: 1(Typ.)
Response time	TR+TF=14ms
Viewing Angle	R/L: 178(Typ.) U/D: 178(Typ.)
Display surface treatment	AG Haze25%
Input interface	OPTICAL(Optional)/ 12GSDI-IN(Optional)/4*3G SDI(Optional)/SDI-IN/ DVI-IN/HDMI/DP*2
GAMMA	LINEAR /1.8/2.0/2.2/2.4/2.6/DICOM/HLG/DSA/DSI
Power adapter	IEC320-C14input interface 3PIN DC output Input voltage: AC100~240V,60Hz Output voltage: 24V Output power: 120W
Display size	759.34x478.86x69.61mm
Net weight of display	14Kg(Excluding base)
Storage/transportation environment	Temperature: -20°C-60°C Humidity: 10% ~90%(No condensation)
Working environment	Temperature: 0°C-50°C Humidity: 20%-85%(No condensation)
Power consumption	Max: ≤60W Standby: ≤1.5W

55-inch DSA Dedicated Display



- Multiple 5VDC power supplies



- With 1080P signal redundancy
The primary signal is lost.
The backup signal is displayed automatically

Max. Support up to five groups of indicator status reminders.

Support DICOM/GAMMA and other display modes

55A14 is a 55-inch DSA dedicated display, which is a medical large-screen display designed for operating rooms. Adopting global world's top medical IPS LCD screen, high brightness, high contrast, high resolution, wide angle of view, bright sense of layer; Support 4K dynamic image real-time display, color gamut in line with BT2020 standards; Power supply redundancy and signal redundancy are adopted to ensure stable and reliable operation picture during operation. No fan design No noise no dust pollution, designed for the operating room medical environment.

Power supply redundancy design

Power supply redundancy Backlight redundancy. When one power supply fails, the other power supply can still supply power to the whole system. The entire screen or half of the screen will not be black. In addition, the load of each power supply is reduced, extending the service life of the power supply.

Protective cover

Adopt high transmittance anti-reflection protection panel, innovative use of new optical bonding technology, eliminate image reflection and ghost, the picture is clearer; Waterproof and dust-proof lamination process and both thin and light appearance, flexible installation methods (on wall, in-wall). It has the characteristics of anti-glare, anti-violence and anti-fingerprint.

Redundant backlight design

Two evenly distributed LED backlight are built into the display screen, and the display only attenuates to a certain extent when one set of backlight is abnormal. The overall picture uniformity is not affected, can still be displayed normally, does not affect the continuation of the operation.

Signal backup function

The display comes with DV2 backup signal function. When the DV2 backup signal has signal input (emergency mode/backup mode), the display will automatically switch to the backup signal display, which will not affect the normal operation.

55-inch DSA Dedicated Display

Model number: 55A14

Technical specification

Device type	55-inch DSA dedicated display
Backlight type	LCD
Panel size	55-inch
Viewing display area	1209.6×680.4mm
Maximum resolution	3840*2160@60Hz
Pixel Pitch	0.315x0.315(mm)
LUT	48Bit
Luminance	700cd/m ² (Typ.)
Contrast	1100: 1(Typ.)
Response time	8ms
Viewing Angle	LEFT-UP: 89° LEFT-DOWN: 89° RIGHT-UP: 89° RIGHT-DOWN: 89°
Display surface treatment	AG Haze28%
Input interface	DVI/DP*2/HDMI*2/ RJ45
GAMMA	DICOM1/DICOM2/LINEAR/1.8/2.0/2.2/2.4/CRT/DSA/DSI
Built-in power supply	Input interface: National standard 220V interface Input voltage: 100~240V,50~60Hz Output voltage: 400W PF:≥0.95
Display size	1252.7x723.7x75.8mm
Net weight of display	35Kg(Without base or bracket)
Storage/transportation environment	Temperature: -20°C-60°C Humidity: 0% ~90%(No condensation)
Working environment	Temperature: 0°C-50°C Humidity: 20%-85%(No condensation)
Power consumption	Max: ≤120W